



# GAT MONTHLY MEMBERSHIP PROGRESS REPORT

Results as of: 4/30/2022

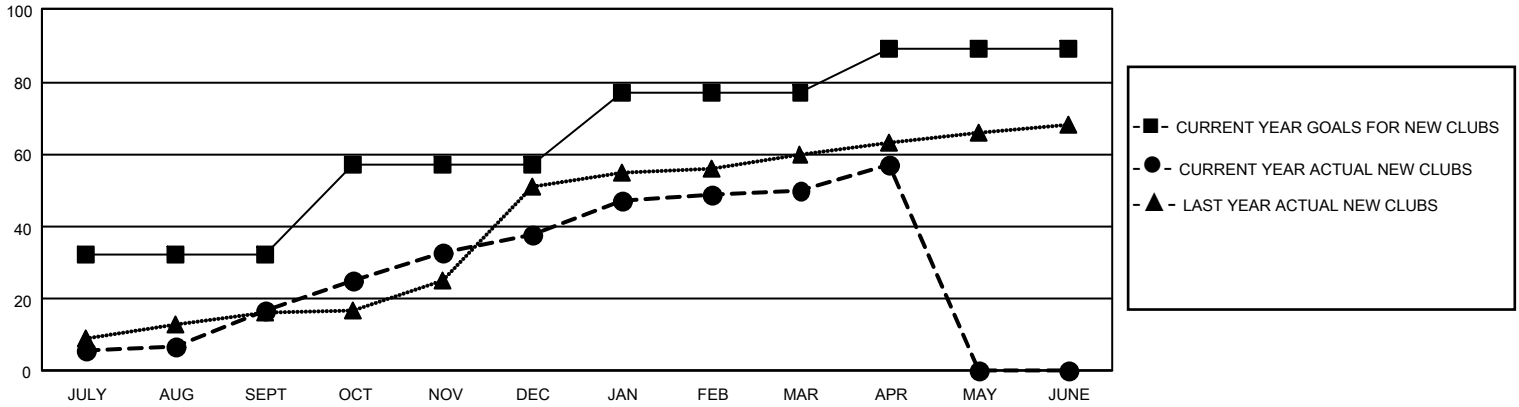
## GMT Constitutional Area 6, Group H

REPORT DOES NOT INCLUDE CLUBS IN UNDISTRICTED AREAS.

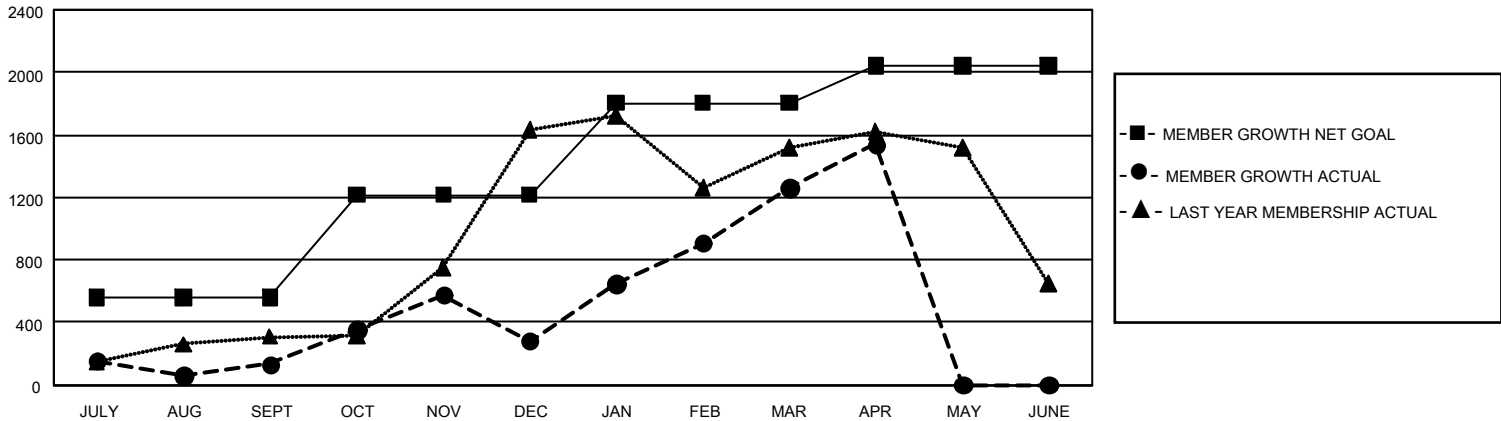
Clubs			
RESULTS FOR 2021-2022			
QUARTER	NEW CLUB GOAL	NEW CLUBS	DROPPED CLUBS
JULY/AUG/SEPT	96	17	21
OCT/NOV/DEC	75	21	13
JAN/FEB/MAR	60	12	5
APR/MAY/JUNE	36	7	0

Members			
RESULTS FOR 2021-2022			
QUARTER	MEMBER GROWTH NET GOAL	MEMBER GROWTH ACTUAL	DROPPED MEMBERS ACTUAL (including transfers)
JULY/AUG/SEPT	560	864	697
OCT/NOV/DEC	655	1,184	973
JAN/FEB/MAR	590	1,514	384
APR/MAY/JUNE	240	400	91

GOALS AND ACTUAL NEW CLUBS CUMULATIVE



GOALS AND ACTUAL MEMBERS CUMULATIVE



<b>DROPPED CLUBS: 39</b>	437 CLUBS OF 767 ADDED 1 OR MORE NEW MEMBERS	<b>GENDER DISTRIBUTION</b>	
		MALE 20,265 (80.07%) FEMALE 5,042 (19.92%) NON BINARY 1 (0.00%) PREFER NOT TO ANSWER 0 (0.00%)	
<b>DROPPED MEMBERS</b>		<a href="#">CLICK HERE FOR CUMULATIVE MEMBERSHIP DATA</a>	
DECEASED 93 CLUB CANCELLED 692 OTHER 1,360 <b>TOTAL 2,145</b>		TOTAL FAMILY UNIT MEMBERS 9,008 FAMILY MEMBERS PAYING HALF DUES 4,796	